

Agenda
Town Council Regular Meeting
Wednesday, July 01, 2020 at 8:00 AM
Via GoToMeeting

You can join the meeting from your computer, tablet or smartphone.

<https://global.gotomeeting.com/join/392525989>

You can also dial in using your phone +1 (669) 224-3412 Access Code: 392-525-989

1. Pledge
2. Visitors
3. Approval of Minutes – June 17, 2020
4. Sustainable CT Presentation
5. Appointments/Reappointments

Appointment

Jane Scully Welch (U) Human Services Advisory Board – term until 6/30/23

Reappointments

Sondra Allen (R) Design Review Board – term until 6/30/23

John Allen (R) Design Review Board – term until 6/30/23

Bob Werner (R) EDC – term until 6/30/24

Roy Sullivan (R) Fish & Games Constables – term until 6/30/22

Litsa Aniskovich (R) Human Services Advisory Board – term until 6/30/23

James Norrie (R) Inland Wetlands Commission – term until 6/30/24

Tom Riccio (R) Shellfish Commission – term until 6/30/22

Mike Shove (U) Public Works Commission – term until 6/30/24

6. Sustainability Committee Charge and Membership
7. Harold Dolan Legacy Statement
8. Chairman's Report
9. Town Manager's Report
10. Town Council Committee Liaison Reports
11. Executive Session Executive Session – Personnel, pursuant to CGS 1-200(6)(A)
12. Collective Bargaining Agreements
13. Adjourn

Sustainable CT

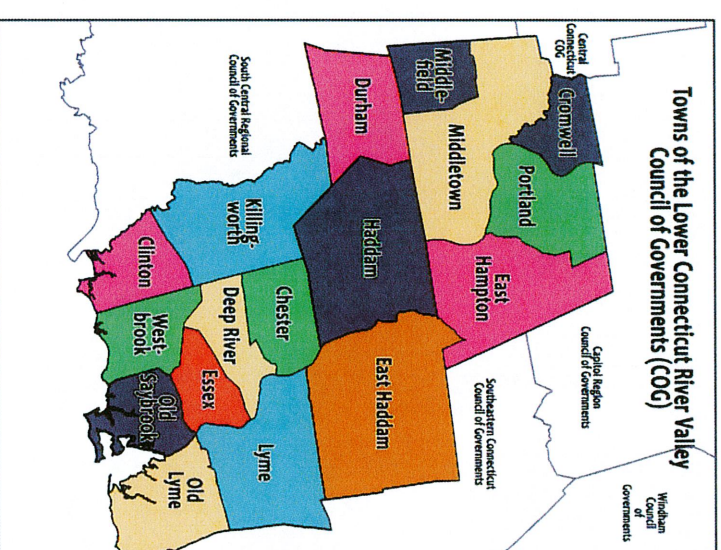
Local Actions. Statewide Impact.®



Caty Fortin & Erin Lindsay
Sustainable CT, RiverCOG Fellows

All Registered River COG Communities

Chester	Clinton
Cromwell	Deep River
Durham	East Haddam
Haddam	Middlefield
Middletown	Essex
Old Saybrook	Portland



Sustainable CT Recognition within RiverCOG

Certified Communities

Silver Certified Towns:

Middletown

*Bronze Certified
Towns:*

Essex

Old

Saybrook

Portland

RiverCOG Members

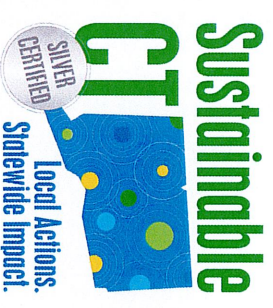
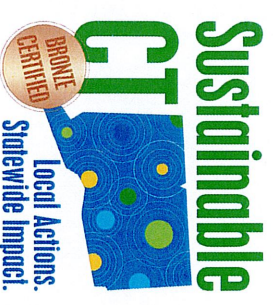
Laura Francis

*First Selectwoman of
Durham*

Sustainable CT Co-Chair

Sam Gold

*Executive Director of Lower
Connecticut River Valley Council
of Governments
Sustainable CT Board Member*



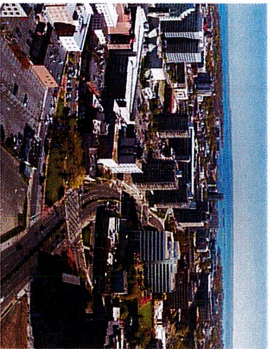
Agenda

I. Sustainable CT Overview

II. Sustainable CT Resources



Why Become a Sustainable CT Community?



Road Map

A menu of coordinated, voluntary actions to promote sustainability



Resources

Support - technical and financial - to help communities with actions



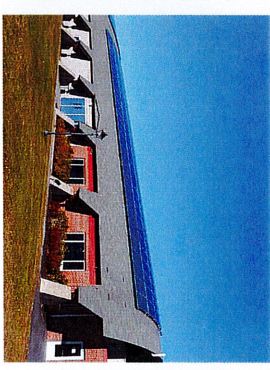
Certification

Recognizing communities for their sustainability achievements



Flexibility

Meeting the needs of *all* communities - urban and rural, big and small



Livability

More sustainable, efficient, safe, resilient, thriving communities

Sustainable CT communities strive to be...

...thriving, resilient, collaborative, and forward-looking. They build community and local economy. They equitably promote the health and well-being of current and future residents. And they respect the finite capacity of the natural environment.

Menu of Voluntary Actions

1. Thriving **local economies**

2. Well-steward **land and natural resources**

3. Vibrant and creative **cultural ecosystems**

4. Dynamic and resilient **planning**

5. Clean and diverse **transportation systems**

6. Efficient **physical infrastructure and operations**

7. Strategic and inclusive **public services**

8. Healthy, efficient and diverse **housing**

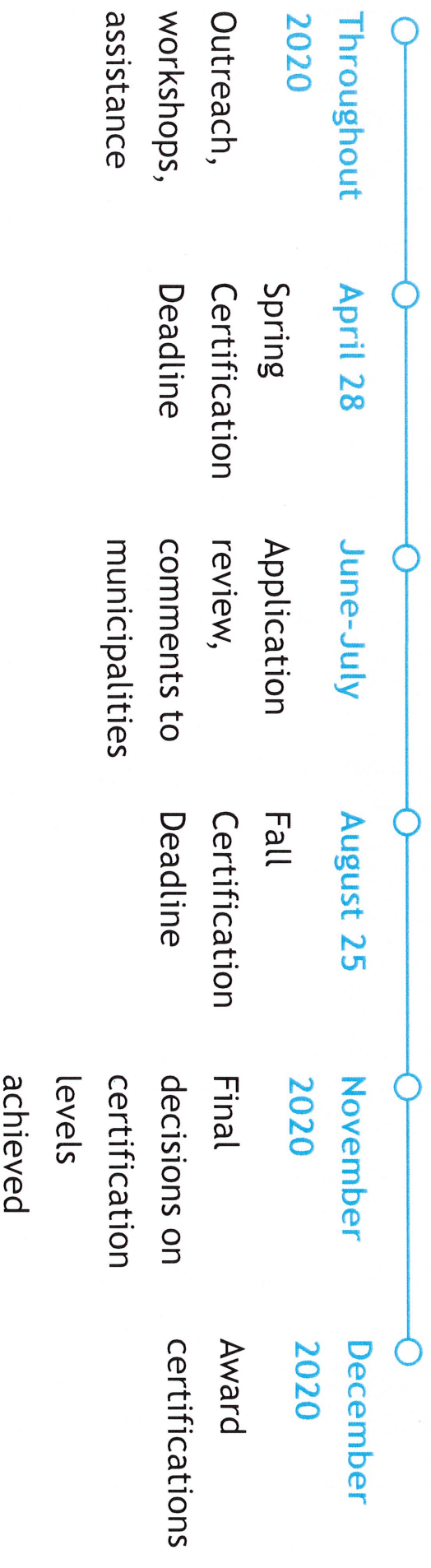
9. Inclusive and equitable **community impacts**

Become a Sustainable CT Community



Pass a resolution, establish a Sustainability Team	Register your community at sustainablect.org	Review the list of actions to see what you have already completed	Optimize for Equity - Start working on your action 9.1 Submission	Complete at least 1 action in the 9 categories. Use our tools and resources!	Get certified!
----------------------------------------------------	--------------------------------------------------------------------------------------	-------------------------------------------------------------------	-------------------------------------------------------------------	------------------------------------------------------------------------------	--------------------------------

Certification Cycle Overview



Agenda

I. Sustainable CT Overview

II. Sustainable CT Resources

Sustainable CT
Local Actions. Statewide Impact.



Support for Towns

A. One-on-One Support

- Phone calls with Sustainable CT staff
- Meetings with towns

C. Multiple Events Every Month

- Webinars
- Workshops and Trainings

B. Free Consulting Services on Many Actions

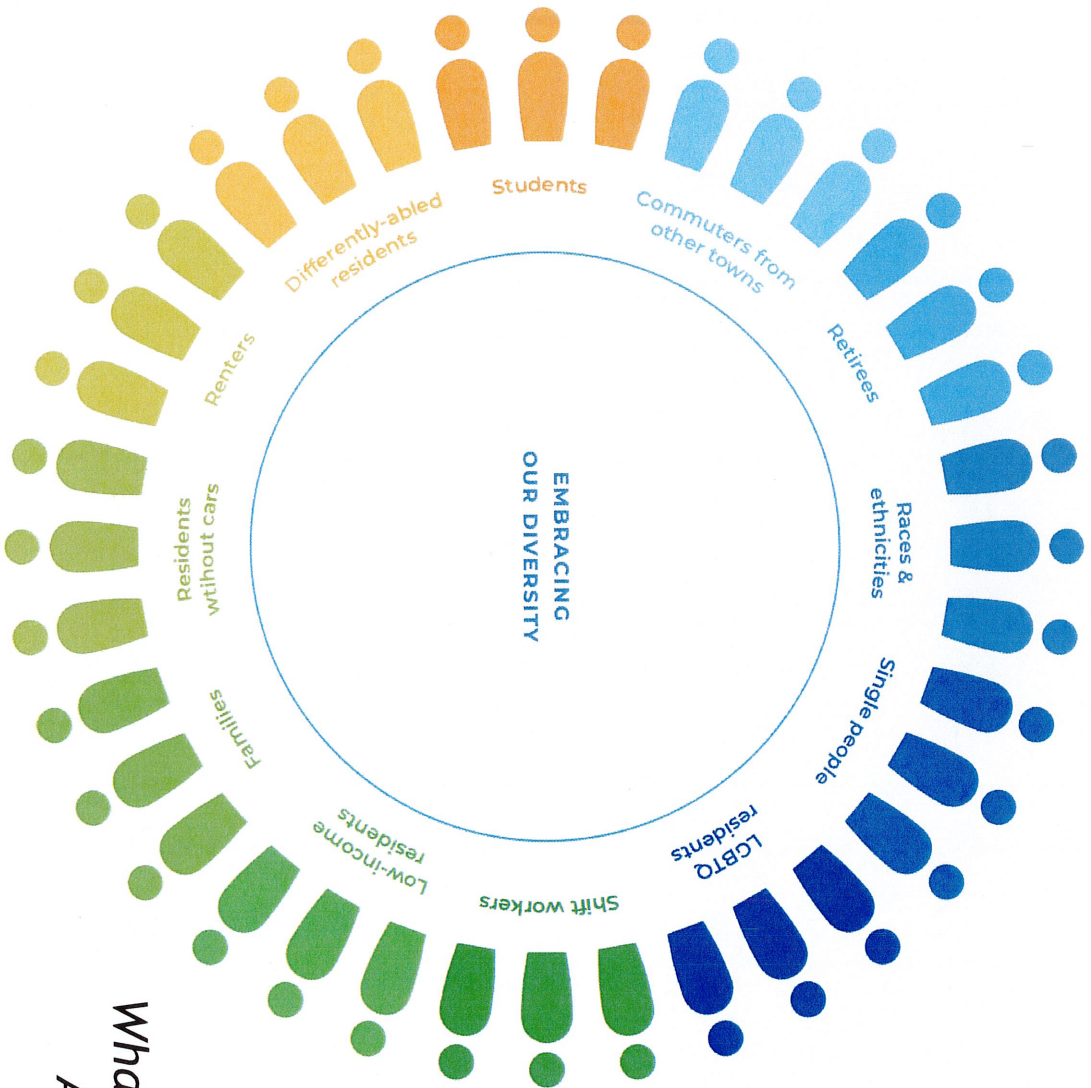
- *Equity*: 4 hours of coaching
- *Resilience*: Community Resilience Building Workshops
- *Energy*: Energy benchmarking with the utilities

D. Sustainable CT Fellows

- Full-time for 10 weeks
- Direct support to towns from regional Council of Governments

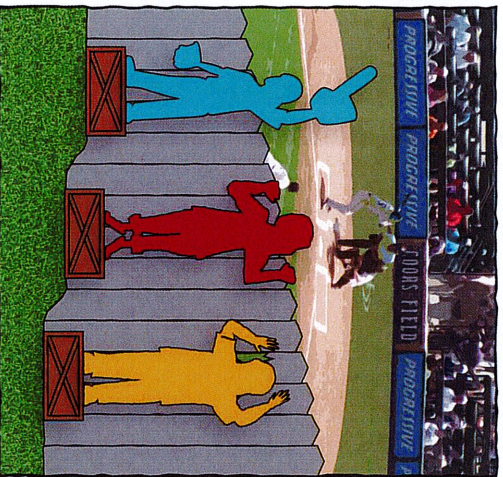
E. Funding from Sustainable CT

- Community Match Fund

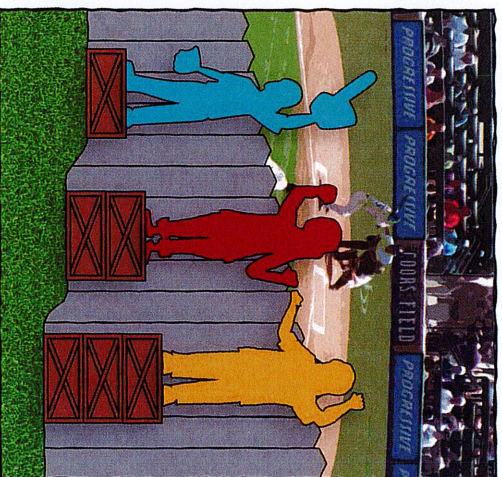


*What communities are in your town?
Are they included and valued?*

What is Equity?



EQUALITY



EQUITY

Equality is a state of affairs in which all people within a specific society have the **same status in all respects**, including rights and access to resources.

Equity is when all people within a specific society are given rights, resources, and access **based on their level of need and experiences**.

Support - Equity

Creating more inclusive and equitable communities means changing systems that have resulted in disparities.

We can begin to address these issues by...

- **Equity Coach**
 - A personalized resource provided by Sustainable CT to assist municipal leaders in registered communities with any issue related to equity and racial justice
- **Equity Toolkit**
 - A comprehensive manual that outlines how to get started with equitable work



EQUITY MEANS...

We know our neighbors.

We value diversity.

All members of our community have the ability to co-create the vision for our town and shape decisions.

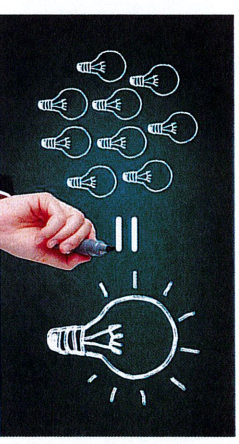
We connect with people who are different from us.

We strive for genuine collaboration.

Support - Community Match Fund

- Promotes sustainability
- Expands Sustainable CT's scope
 - Project-focused
- Allows for creativity and innovation
- Facilitates inter-town collaboration
- Promotes community involvement
 - Connects municipal staff with residents
 - Promotes resident-led projects

Fast, flexible funding mechanism to support sustainability-related projects throughout Connecticut



Why Participate?

- Recognition
- Funding & resources
- Build community
- Inspiration
- Cost savings
- Partnerships
- Peer learning



Find Out More

www.sustainablect.org

info@sustainablect.org

860.465.0258



@sustainablect



Please reach us at: erin.lindsay@uconn.edu
and cfortin@conncoll.edu



It is with great sadness that the Town marks the June 14, 2020 passing of an outstanding citizen, tireless volunteer, friendly tree farmer, lifelong learner, and man of integrity and wit, Harold K. "Hal" Dolan, Jr.

Hal served in the Marines during the Korean War and was proud of attending the University of Connecticut on the G.I. Bill. Hal's commitment to making Clinton a better place to live began a few years later in 1962 when he and his young family set down roots at their colonial Kelseytown Road farmhouse. While raising their four children with his beloved wife JoAnn, Hal found time to be a "hands on" volunteer in many various areas of town. He'd fondly recall being part of a rag tag Park and Rec Department many years ago that built parts of a football field by hand, and as being a founding member of the Clinton Touchdown Club, and charter member of the Clinton Country Club with JoAnn. His "hands on" volunteering approach was near legendary as a former Chairman, member, and most recently member emeritus of the Town's Water Pollution Control Commission (WPCC).

With the WPCC, Hal was a key author in writing policies and ordinances that have resulted in cleaner groundwater and waterways in Clinton. He was committed to public participation and transparency in government, and worked hard with his commission to keep politics out of public service. As an example, he was known throughout the State for asking direct but fair questions to engineers and PhD research scientists, as well as politicians and State of Connecticut regulators, and he never failed to take detailed notes to share with his WPCC commission members. Hal organized countless WPCC field trips to university research facilities and the private research facilities of other innovators in the field to help educate himself, his fellow commissioners, and the Townspeople. Rain or shine, Hal oversaw every test-pitting, soil boring, and load-testing investigation completed by WPCC engineers throughout the Town.

Hal was the driving force behind the recent formal closure of the Town's septage lagoons and was a contributor and outspoken proponent of the Town's Wastewater Facilities Plan that was recognized by the State as being both innovative and focused on the unique challenges faced by the Town of Clinton. Hal never gave up on championing the goal of cleaner groundwater, sustainable wastewater treatment, and an aggressive plan for addressing wastewater issues of which he reiterated with fire in his eyes would only be more complicated and costly if we were to "kick the can down the road".

For all these reasons and more, the Town would like to recognize Harold 'Hal' Dolan for the thousands of hours and years of unwavering commitment, energy and drive that he gave to make the Town of Clinton a better community.

TOWN MANAGER'S REPORT

TO: Honorable Town Council Members

FROM: Karl F. Kilduff, Town Manager

DATE: July 1, 2020

Please find my report concerning various items of interest to the Town Council and community.

1. Council Business:

- a) Financial Controls: As noted earlier, financial controls were put in place to limit expenditures, require pre-approvals on expenses over \$1,000, freeze capital projects and hiring. The goal has been to focus on necessary and essential expenses. As a new fiscal year will start on July 1, these controls will remain in effect. The key metric for the Town at this point is to assess the strength of revenue collection through the end of July. The reduced interest rate program approved previously by the Council ends on October. So a year-to-year comparison of revenue will be important to gauge the strength of collections during the first month. Decisions on expenses and management to cash flow will come out of that key measure.

2. Connecticut Conference of Municipalities:

- a) As I reported earlier, CCM conducted its first Legislative Committee meeting virtually on June 16, 2020 since March. The primary thrust of the discussion was the possible agenda for a Special Session of the General Assembly. The state of the State's budget was also of concern as well as the timing of deficit mitigation efforts which could include reductions to municipal aid. It was suggested that budget changes may not be known until the Fall.
- b) CCM has also been advocating for an increase in the distribution of CARES Act funding. The federal government provided the funding as part of a relief package for COVID-19 with a requirement that a portion be dedicated to municipalities. Thus far, the State has only identified a small amount to be distributed as part of reimbursing municipal response expenses. There was the suggestion that the balance of the distribution could be made as a part of the expenses associated with re-opening schools in the Fall. Given the amount of funding still available, the matter deserves continued monitoring.

3. River COG:

- a) The River COG met on June 24, 2020 covering a wide range to topics, including:
 - Transit Study. A draft report has been put together which would result in the merger of 9-Town Transit with Middletown Area Transit. The governance of the merged districts and the facilities plan has been completed. A Memorandum of Understanding between the DOT and the two districts is in process which would layout the path forward merging the two. Public engagement over the plan is anticipated during the summer.

- Two interns working for the COG this summer on Sustainable CT gave a presentation on the program and their role in helping towns work on their Sustainable CT certification.
[Presentation included in the Agenda Packet]
- The COG's FY2021 budget was adopted with its primary revenue from the State uncertain. The budget allows for contingencies to respond to a reduction in state support and modifies the annual work plan in the worst case scenario. Municipal dues were approved with no increase (as was budgeted in the Town's budget).
- COVID recovery was discussed again, leading to a discussion on how municipal services might have to be revised going forward.
- MIRA was reviewed at some length given the recent vote of the MIRA board to end the possible improvement to the Hartford waste-to-energy facility. The burn plant would be retooled to serve as a transfer station to ship waste out of the State. MIRA has an obligation to continue taking waste until 2027. However, towns can opt out of a cheaper alternative appears in the marketplace. Local or regional decision making is complicated by the lack of a policy from the state or mandate/incentive to create a market for solid waste.

4. Miscellaneous:

- a) Joel & Eliot Roof Project: The Roof Building Committee received a report on the bid responses for the roof work at Joel and Eliot Schools. The Committee recommended awarding the bid to lowest responsible bidder. They were also seeking a Clerk of the Works to serve as the "owner's representative" on the project to supervise the quality of the contractor's work.
- b) Human Services Advisory Commission: I recently met with some members of the Human Services Advisory Commission. Given the recent turnover in Commission members, the group is trying to get its arms around its charge. To that end, they are in the process of re-writing their by-laws. I advised them on some aspects of the by-laws and offered that they should be ratified by the Town Council. We also discussed performance measures which might help better inform the Commission (and others) on the work and impact of the Human Services Department.
- c) Town Hall Status: Town Hall re-opened to the public on Monday, June 22, 2020 for services. The public has adapted well to the limited access points and are still conducting a significant amount of business from a distance rather than in person.